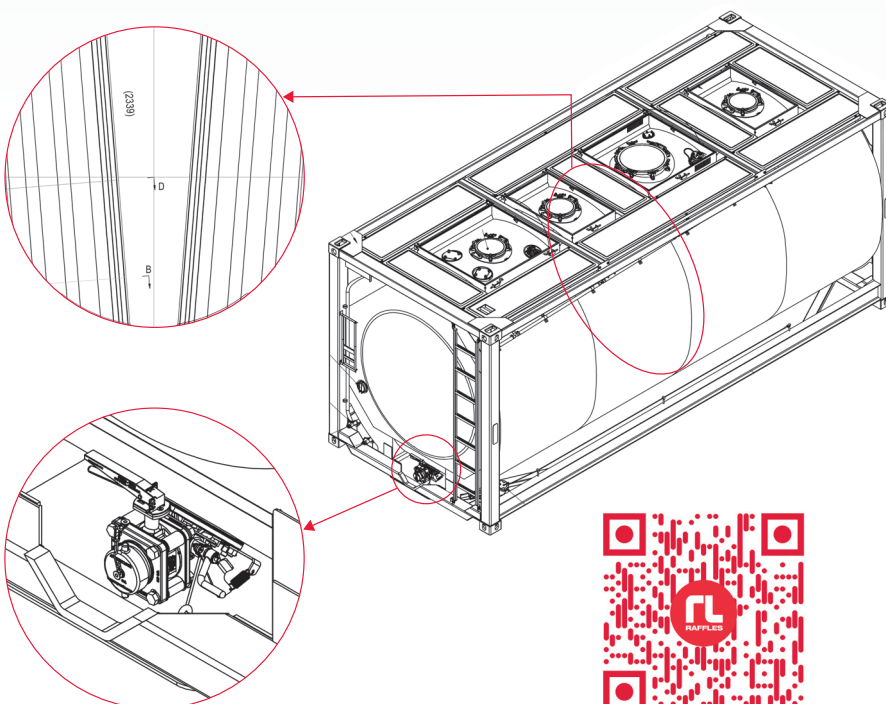




T11 20 FT ISO, 26000 LITRE TANK CONTAINERS WITH BAFFLES

For the Transport and Storage of Liquid Products



- V-shaped 70% coverage, stainless steel baffles
- Cleaning hatches (3) to optimize the cleaning process
- Full frame design
- Low tare weight
- Insulated and fitted with heating coils
- Global availability
- European manufactured valves
- Chemical grade and food grade tanks (dedicated fleets)
- Full coverage walkways



CONNECT TO
RAFFLESLEASE.COM

T11 20 FT ISO, 26000 LITRE TANK CONTAINER STANDARD SPECIFICATIONS*

CAPACITY	26000 litres / 6868 U.S. gallons	BAFFLES	V-Shaped (70% coverage) stainless steel
T CODE	T11	LADDER	Fitted to the end of the tank
LENGTH	20 feet (6.058 meters)	TOP DISCHARGE	2 x DN 80 / 3 inch provision fitted
WIDTH	8 feet (2.438 meters)	BOTTOM DISCHARGE	3 closures; 80 mm / 3 inches - 45° foot valve + stainless steel butterfly valve + 3 inches BSP with cap
HEIGHT	8 feet, 6 inches (2.591 meters)	FILLING PORT / SPARE CONNECTION	80 mm / 3 inches
MAXIMUM GROSS	36000 kg (79366 lbs.)	MANWAY	500 mm / 20 inches diameter, swing bolt closures (8) with wing nuts
TARE WEIGHT	26000L: 3900 kg (8598 lbs.)	CLEANING HATCHES	300 mm stainless steel (3)
WORKING PRESSURE	4 bar/ 58 psi	AIR LINE	40 mm / 1.5 inch stainless steel ball valve with pressure gauge
TEST PRESSURE	6 bar/ 87 psi	SPILL BOXES	Two fitted with drain tubes
DESIGN TEMP	-40 C to 130 C (Loading temp up to 150C)	SAFETY DEVICES	2.5 inch BSP pressure relief valve set at 4.4 bar / 64 psi. Fusible link fitted to bottom valve. Grounding connection.
BARREL THICKNESS & CONSTRUCTION	4.4 mm equivalent reference steel, 316L stainless steel construction	INSULATION AND CLADDING	Rockwool in 50 mm thickness and GRP cladding
DESIGN CODE	ASME VIII DIV.1 / EN14025 (where applicable)	HEATING / COOLING	Coils with 14 m2 effective heating surface and 4 bar working pressure. BSP male threaded connections.
FRAME TYPE	Full	WALKWAY	Full coverage, Marine grade aluminium & provision to fit handrails
		THERMOMETER	Surface sensor gauge fitted, reading -40C/-40 F to 160C/320F
		GASKETS	For manlid only : PTFE outer encapsulating EPDM inner Others: PTFE fitted. Can be changed to meet chemical or food grade requirements or customer specification.

APPROVALS:

All global approvals for international transport as UN Portable tank including CSC, TC (Transport Canada), FRA, UK Dft, TIR, IMDG, RID/ADR, US DOT/CFR 49, UIC and other local approvals.

SPECIFICATION OPTIONS:

- Collapsible handrails
- Ground operated air-line
- Siphon tube (top discharge)
- Various valve options
- GPS tracking and telemetry systems

* All specification details are based on the average T11 type, 26000 litre capacity tank containers in the Raffles Lease fleet. Specifications may vary based on a selected tank container. For more specific details please contact your local Raffles Lease office. Our full office list can be found on our website at www.raffleslease.com

THE BENEFITS AND ADVANTAGES OF BAFFLES IN TANK CONTAINERS

Baffles are partitions, placed vertically or horizontally, in liquid pressure vessels to provide surge protection. Baffles reduce cargo movement

during transport and enhance safety. Without baffles, the liquid cargo can surge when the transport vehicle stops or starts quickly, which can lead to a rollover or disengagement from the chassis, railcar or other platform.

Baffles also provide a way for cargo to be safely shipped in quantities more than 20% and less than 80% of the total capacity of the container. A significant value for high and low density products. Raffles Lease offers tank containers with curved baffles and V-shaped baffles.



Raffles Lease Ltd.

Elbberg 6b, 22767 Hamburg
GERMANY

Phone: +49 40 300684796

raffleslease.com



VIEW THIS BROCHURE ONLINE