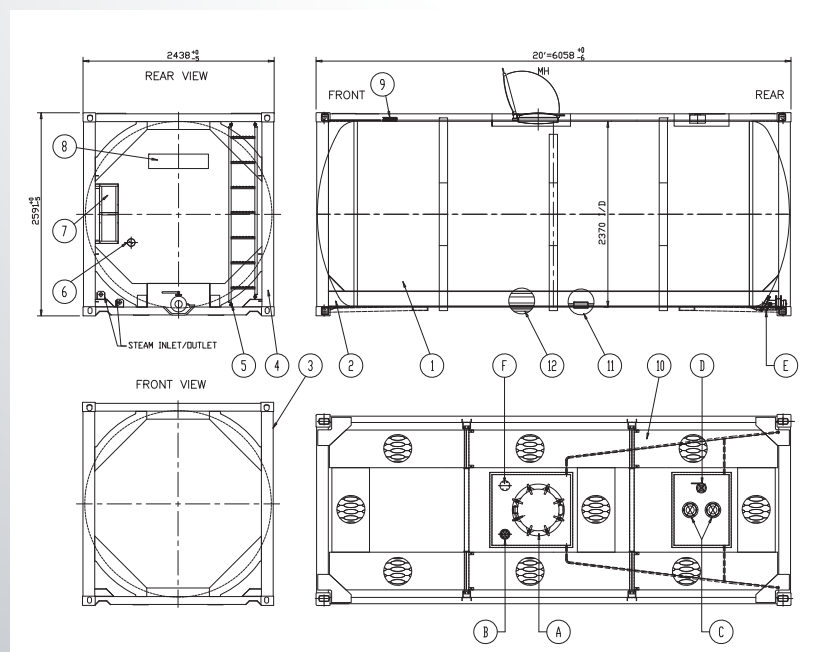




## T11 20 FT ISO, 25000 AND 26000 LITRE TANK CONTAINERS

For the Transport and Storage of Liquid Products



- Large capacity
- Full frame design
- Low tare weight
- Insulated and fitted with heating coils
- Global availability
- European manufactured valves
- Chemical grade and food grade tanks (dedicated fleets)
- B Type walkways

# T11 20 FT ISO, 25000 AND 26000 LITRE TANK CONTAINER

## STANDARD SPECIFICATIONS\*

<b>CAPACITY</b>	25000 litres / 6604 U.S. gallons 26000 litres / 6868 U.S. gallons	<b>LADDER</b>	Fitted to the end of the tank
<b>T CODE</b>	T11	<b>TOP DISCHARGE</b>	2 x DN 80 / 3 inch provision fitted
<b>LENGTH</b>	20 feet (6.058 meters)	<b>BOTTOM DISCHARGE</b>	3 closures; 80 mm / 3 inches – 45° foot valve + stainless steel butterfly valve + 3 inches BSP with cap
<b>WIDTH</b>	8 feet (2.438 meters)	<b>FILLING PORT / SPARE CONNECTION</b>	80 mm / 3 inches
<b>HEIGHT</b>	8 feet, 6 inches (2.591 meters)	<b>MANWAY</b>	500 mm / 20 inches diameter, swing bolt closures (8) with wing nuts
<b>MAXIMUM GROSS</b>	36000 kg (79366 lbs.)	<b>AIR LINE</b>	40 mm / 1.5 inch stainless steel ball valve with pressure gauge
<b>TARE WEIGHT</b>	25000L: 3670 kg (8090 lbs.) 26000L: 3730 kg (8223 lbs.)	<b>SPILL BOXES</b>	Two fitted with drain tubes
<b>WORKING PRESSURE</b>	4 bar/ 58 psi	<b>SAFETY DEVICES</b>	2.5 inch BSP pressure relief valve set at 4.4 bar / 64 psi. Fusible link fitted to bottom valve. Grounding connection.
<b>TEST PRESSURE</b>	6 bar/ 87 psi	<b>INSULATION AND CLADDING</b>	Rockwool in 50 mm thickness and GRP cladding
<b>DESIGN TEMP</b>	-40 C to 130 C (Loading temp up to 150C)	<b>HEATING / COOLING</b>	Coils with 12 m2 effective heating surface and 4 bar working pressure. BSP male threaded connections.
<b>BARREL THICKNESS &amp; CONSTRUCTION</b>	4.4 mm equivalent reference steel, 316L stainless steel construction	<b>WALKWAY</b>	B Type, Marine grade aluminium & provision to fit handrails
<b>DESIGN CODE</b>	ASME VIII DIV.1 / EN14025 (where applicable)	<b>THERMOMETER</b>	Surface sensor gauge fitted, reading -40C/-40 F to 160C/320F
<b>FRAME TYPE</b>	Full	<b>GASKETS</b>	For manlid only : PTFE outer encapsulating EPDM inner  Others: PTFE fitted. Can be changed to meet chemical or food grade requirements or customer specification.

### APPROVALS:

All global approvals for international transport as UN Portable tank including CSC, TC ( Transport Canada), FRA, UK Dft, TIR, IMDG, RID/ ADR, US DOT/ CFR 49, UIC and other local approvals.

### SPECIFICATION OPTIONS:

- Collapsible handrails
- Ground operated air-line
- Full walkways
- Siphon tube (top discharge)
- Various valve options
- GPS tracking and telemetry systems
- V-Shaped, 70% coverage baffles (26000 litre tanks)

\*All specification details are based on the average T11 type, 25000 and 26000 litre capacity tank containers in the Raffles Lease fleet. Specifications may vary based on a selected tank container. For more specific details please contact your local Raffles Lease office. Our full office list can be found on our website at [www.raffleslease.com](http://www.raffleslease.com)

Raffles Lease utilizes the latest CAD technology for our tank containers. Our Technical and Maintenance & Repair Departments utilize this technology to design the optimal tank container configuration and manage modification projects that may require unique specifications to meet our client's requirements.



**Raffles Lease Ltd.**

Elbberg 6b, 22767 Hamburg GERMANY | Phone: +49 40 300684796 | [raffleslease.com](http://raffleslease.com)